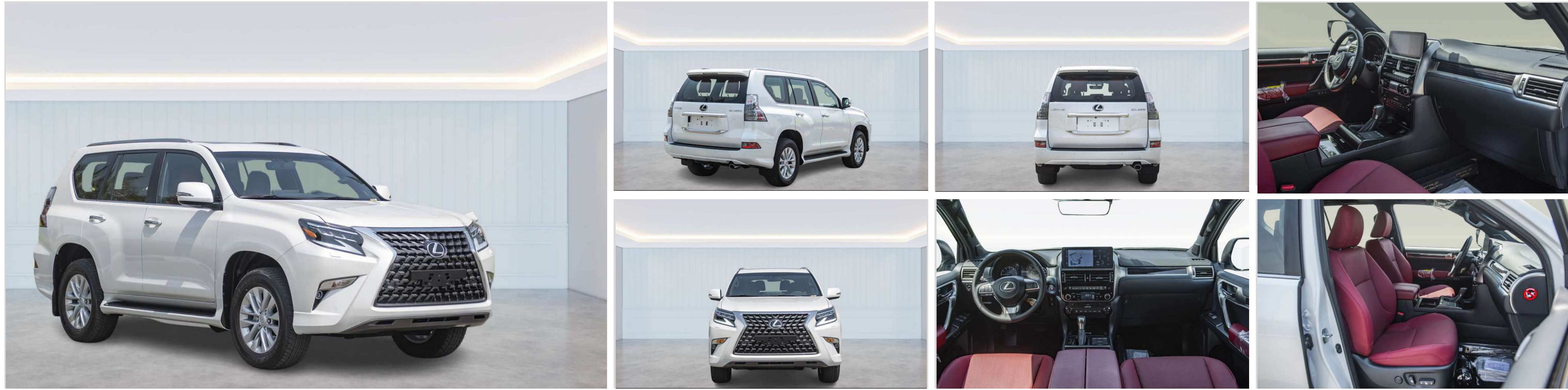


2023 LEXUS GX460 PLATINUM V8 4.6L PETROL 7 SEAT , AT



ENGINE-POWER-TRANSMISSION

- MODEL CODE – URJ150L-GKTZV
- FUEL TANK CAPACITY: 87 LITERS
- SUPER INTELLIGENT 8 SPEED MULTI MODE AUTOMATIC TRANSMISSION
- DRIVE TRAIN LAYOUT: 4WD
- ENGINE:1UR-FE, 4.6 LITRE, 32 VALVE, DOHC - V8 ENGINE WITH DUAL VVTI
- POWER:292 HP/5500RPM (NET), TORQUE: 44.7 KG M/3500 RPM (NET)

EXTERIOR FEATURES

- LED-3 BI HEADLAMPS WITH AUTOMATIC HIGH BEAM SYSTEM
- MOON / SUN ROOF
- INTEGRATED ROOF RAILS
- 3-EYE PROJECTOR LED HEADLAMPS
- 18" GUNMETAL ALLOY WHEELS
- SMART ENTRY & START SYSTEM

INTERIOR FEATURES

- SEMI ANILINE LEATHER SEATS
- 17 SPEAKER MARK LEVINSON - REFERENCE SURROUND SYSTEM WITH METAL FINISHED
- SPEAKERS+ IN-DASH DVD CHANGER AM/ FM RADIO, MP3 & WMA
- LEXUS SAFETY SYSTEM + PRE- COLLISION SYSTEM, DYNAMIC RADAR CRUISE CONTROL,
- LANE DEPARTURE ALERT, LANE CHANGE ASSIST WITH BLIND SPOT MONITOR (BSM) + REAR CROSS TRAFFIC
- ALERT, CRAWL CONTROL SYSTEM MULTI TERRAIN SELECT WITH STEERING GUIDE LINE + OFF ROAD GUIDE + MULTI TERRAIN ABS
- EXHAUST TIP; RR. COMBINATION LAMP - (LENS - RED & INNER CHROME - BLACK); ORVM - BODY COLOUR + CHROME GARNISH
- 10 WAY POWER FRONT SEATS WITH MEMORY
- VENTILATED FRONT SEATS
- COOL BOX
- PLAYABLE WITH ASL AND DSP
- SAFETY & CONVENIENCE
- PARKING SUPPORT ALERT/ BRAKE SYSTEM: FR + RR - 8 SENSORS
- 3- EYE ULTRA SMALL PROJECTOR LED HEADLAMPS WITH AHB
- SPORTS PACKAGE - FR. & RR BUMPER SPOILER - HIGH GLOSS SILVER; RADIATOR GRILL LOWER GARNISH - CHROME PLATED;
- POWER DOOR MIRRORS (EC) + MEMORY + TILT DOWN ON REVERSE FUNCTION AND AUTO RETRACTABLE WITH CAMERA (P)
- 10.3" DISPLAY WITH NAVIGATION

DIMENSIONS

- LENGTH 4880 MM, WIDTH 1885 MM, HEIGHT 1845 MM
- WHEELBASE: 2790 MM, GROUND CLEARANCE: 215 MM