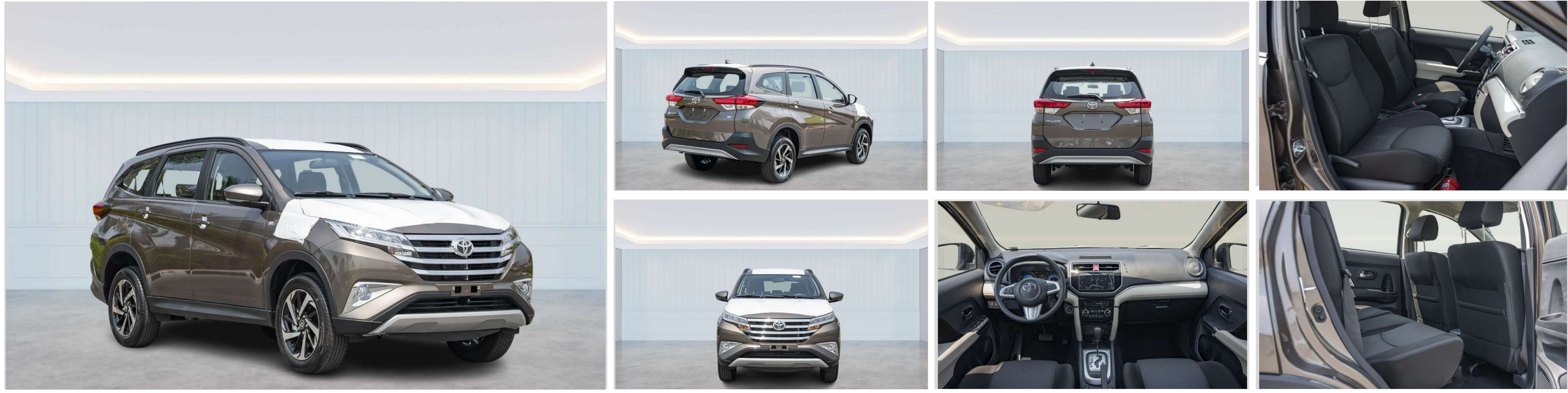


2023 TOYOTA RUSH 1.5L PETROL A/T



ENGINE & TRANSMISSION

- ENGINE: 1.5L, PETROL, 16 VALVE, 4 CYLINDER + DUAL VVT-I 2NR-VE
- OUTPUT (hp/rpm): 103/6000
- TORQUE (kg-m/rpm):13.9/4200
- EMISSION :EURO 4
- TRANSMISSION:4 SPEED AUTOMATIC
- TERRAIN: FRONT ENGINE, REAR DRIVE

DIMENSION, CAPACITIES & SUSPENSIONS

- TYRES SIZE: 215/60 R17 AL
- DIMENSIONS (mm): L4,435 x W1,695 x H 1,705
- FRONT SUSPENSION : STRUT WITH STABILIZER
- REAR SUSPENSION :5 LINK WITH STABILIZER
- FUEL TANK CAPACITY:45 Litres
- WHEELBASE :2685 MM
- BRAKE (FR/RR) :DISC/DRUM
- ALTERNATOR :80 A
- GROSS VEHICLE WEIGHT (gvw) :1,870 KG
- SEATING CAPACITY:7 SEATER

INTERIOR FEATURES & SAFETY

- POWER STEERING - EPS
- PUSH START BUTTON
- PUSH START BUTTON
- BACK MONITOR
- SEAT MATERIAL - HIGH FABRIC
- POWER WINDOWS
- ANTI THEFT SYSTEM - IMMOBILIZER WITH ALARM
- VEHICLE STABILITY CONTROL (VSC), ESS, HILL ASSIST
- AIRBAGS- (DUAL FRONT/ SIDES/CURTAIN (8 AIR BAGS)
- STEERING WHEEL - LEATHER FINISH
- SHIFT LEVER KNOB - LEATHER FINISH
- FLOOR MATS
- AUDIO - D/A (DISPLAY AUDIO) AM/FM - USB
- STEERING WHEEL CONTROLS- AUDION + TELEPHONE
- NUMBER OF SPEAKERS - 8
- WIRELESS DOOR LOCK
- ANTI-LOCK BRAKING SYSTEM (ABS)

EXTERIOR FEATURES

- HEADLAMPS - LED + SMOKE TYPE
- FRONT & REAR BUMPER- PAINT - MATERIAL
- FRONT & REAR FOG LAMPS
- ROOF RAILS
- FRONT GRILLE -SMOKE TYPE
- OUTSIDE REAR VIEW MIRROR - ELECTRIC + RETRACTABLE + PAINT (TURN LAMP)
- INSIDE REAR VIEW MIRROR - DAY/NIGHT
- ANTENNA - SHARK FINN
- POWER DOOR LOCK
- REAR WINDOW WIPER
- REAR SPOILER
- BACK SENSOR
- HIGH MOUNT STOP LAMP