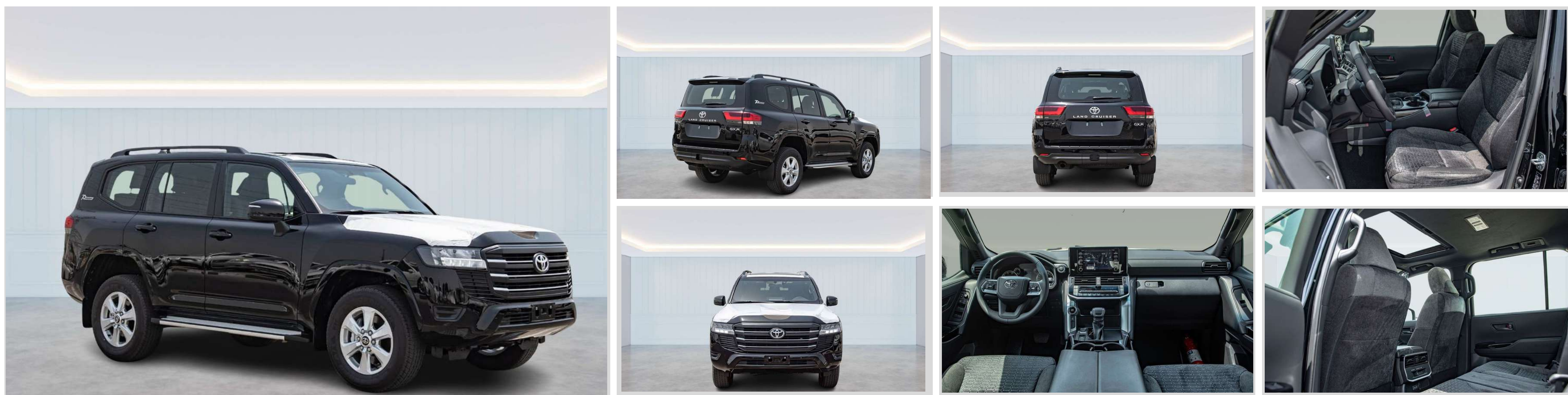


2023 TOYOTA LAND CRUISER GXR 3.3L DIESEL , A/T, TWIN TURBO



ENGINE & TRANSMISSION

- ENGINE: 3.3L, TWIN TURBO
- TORQUE : 71.38kg /2600
- FUEL SYSTEM : FUEL INJECTION
- OUTPUT (hp/rpm): 302 / 4000
- TRANSMISSION: 10 AT
- TERRAIN: 4x4 FULL-TIME

DIMENSION, CAPACITIES & SUSPENSIONS

- TYRES SIZE: 265/55R20
- DIMENSIONS (mm): L 5015 x W 1980 x H 1890
- FUEL TANK CAPACITY: 110L WITH SUB TANK
- GROSS WEIGHT (KG): 3,230 KG
- NUMBER OF DOORS: 5
- SEATING CAPACITY: 7

INTERIOR FEATURES & SAFETY

- Interior features & Safety
- WIRELESS CHARGER
- SIDE & CURTAIN AIRBAGS
- POWER DOOR LOCK
- DOWNHILL ASSIST CONTROL (DAC)
- CRUISE CONTROL
- REAR DIFFERENTIAL LOCK
- NUMBER OF SPEAKERS - 6
- POWER STEERING
- ANTI THEFT SYSTEM WITH SECURITY HORN
- BACK MONITOR
- ANTI-LOCK BRAKING SYSTEM (ABS), BRAKE ASSIST (BA)
- SEAT MATERIAL - SYNTHETIC LEATHER
- STEERING WHEEL - LEATHER + WOOD
- POWERED WINDOWS
- VEHICLE STABILITY CONTROL (VSC)
- REMOTE ENGINE STARTER
- CRAWL CONTROL
- 1 USB + 5 USB CHARGER
- APPLE CARPLAY & ANDROID AUTO
- ROOM LAMP - LED
- TRACTION CONTROL SYSTEM
- WIRELESS DOOR LOCK - SMART + PUSH + PBD
- COOL BOX
- DUAL FRONT AIRBAGS

EXTERIOR FEATURES

- ALLOY WHEELS - 20"
- SUNROOF
- ROOF RAILS
- FRONT & REAR BUMPERS - AERO
- PARKING BRAKE - EPB WITH HOLD
- LED FRONT FOG & DRIVING LAMPS
- OUTSIDE REAR VIEW MIRROR - REMOTE + AR + REVERSE + COLOR + TURN SIGNAL LAMP
- SENSORS - FRONT - 4 AND REAR - 4
- HEADLAMP - LOW + HIGH LED
- TONNOUE COVER
- HEADLAMP CLEANER
- POWERED BACK DOOR
- TOWING HITCH
- CLEARANCE LAMP - LED WITH DAYTIME RUNNING SYSTEM