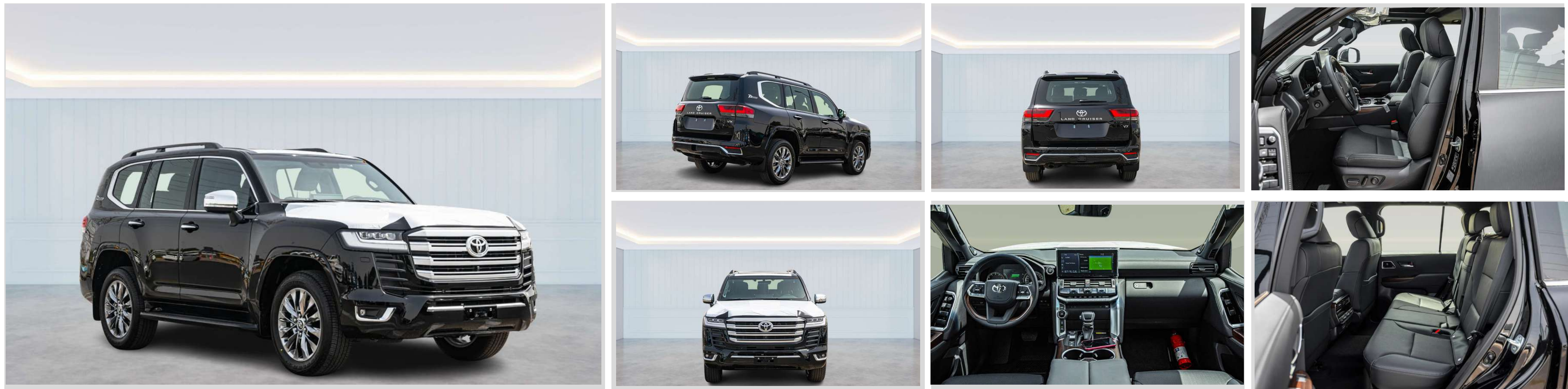


# 2023 TOYOTA LAND CRUISER VX 3.5L PETROL, A/T



## ENGINE & TRANSMISSION

- ENGINE: 3.5L
- TRANSMISSION: 10 A/T
- Max Torque : 700 NM / 1600-2600 RPM
- TERRAIN: 4x4 FULL-TIME
- Max Output : 301 HP / 4000 RPM

## DIMENSION, CAPACITIES & SUSPENSIONS

- TYRES SIZE: 265/55R20
- NUMBER OF SEATS : 7
- NUMBER OF DOORS: 5
- DIMENSIONS (mm): L 4985x W 1980 x H 1890
- Gross Vehicle Weight : 3230 (Kg)
- Fuel Tank Capacity : 110 (Liter)

## INTERIOR FEATURES & SAFETY

- AUTO AIR CONDITIONING - 4 SEAT INDEPENDENT
- DAYTIME RUNNING LIGHT SYSTEM - LED
- STEERING WHEEL CONTROL FOR AUDIO/TELEPHONE
- ANTI THEFT SYSTEM - IMMOBILIZER WITH SECURITY HORN
- WIRELESS DEVICE SUPPORT - BLUETOOTH & WIFI
- SEAT HEATER - FRONT
- LEATHER STEERING WHEEL
- PUSH START BUTTON
- OUTSIDE REAR VIEW MIRROR
- BACK MONITOR - MULTI TERRAIN MONITOR
- TYRE INFLATION PRESSURE WARNING
- CRAWL CONTROL
- POWER WINDOWS
- VEHICLE DYNAMIC MANAGEMENT
- DUAL FRONT AIRBAGS/SIDES/CURTAIN/KNEE
- MULTI INFORMATION DISPLAY
- CUP HOLDER
- SEAT MATERIAL - LEATHER
- HEATER CONTROL - 4 SEAT INDEPENDENT
- LIGHT CONTROL SYSTEM WITH 3P
- BRAKE ASSIST (BA)
- REAR CONSOLE BOX - SYNTHETIC LEATHER
- COOL BOX
- PITCH AND BOUNCE CONTROL
- CRUISE CONTROL
- MICROPHONE & AMPLIFIER
- AUDIO - DVD 10 SPEAKER ( 12.3 INCH)
- POWER STEERING - HPS + VSC + STEERAGE ACT
- FRONT SEAT (D + P) - POWER ADJUSTER
- GLOVE BOX
- SEAT LUMBAR SUPPORT - D-POWER
- REAR AUDIO - SEAT ENTERTAINMENT
- "VEHICLE STABILITY CONTROL
- HILL STARTING ASSIST SYSTEM
- ACTIVE TRACTION CONTROL (ATRC)
- REAR DIFFERENTIAL LOCK

## EXTERIOR FEATURES

- SUNROOF & MOON ROOF
- WIRELESS DOOR LOCK
- REAR GLASS - GRAY PRIVACY TEMPERED
- REAR FOG LAMPS
- BACK DOOR - AUTO
- HEADLIGHT LEVELING - DYNAMIC AUTO
- TOWING HITCH WITH PINTLE HOOK
- SMART KEYLESS ENTRY
- REAR COMBINATION LAMP
- ROOF RAIL
- HIGH MOUNT STOP LAMP
- FRONT FOG & DRIVING LAMP - LED