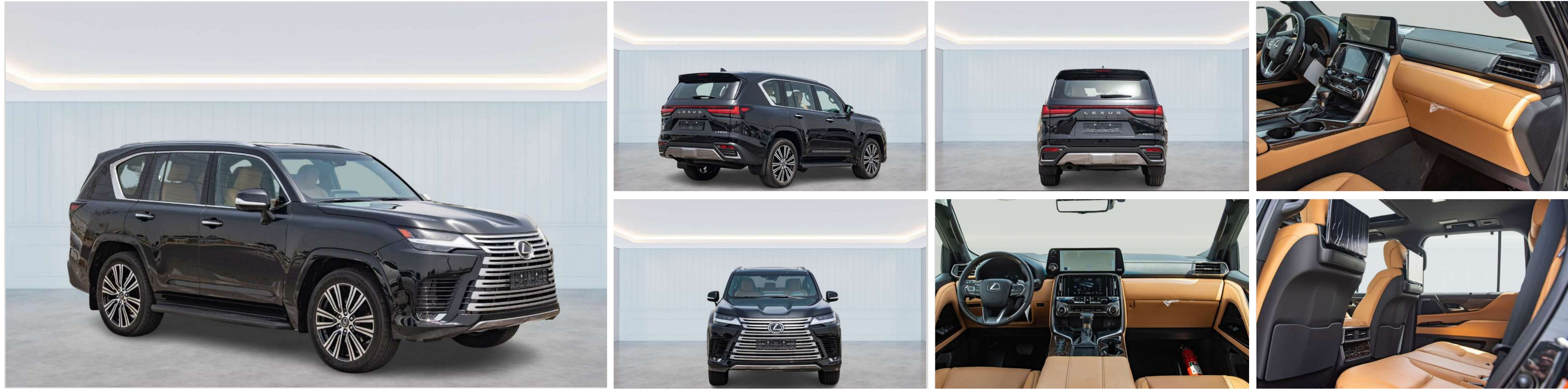


2023 LEXUS LX600 3.5L PETROL, A/T, SIGNATURE



ENGINE & TRANSMISSION

- ENGINE:3.5L, V6, TWIN TURBO
- OUTPUT HP/rpm:409HP/5,200 rpm (EEC net)
- TORQUE :650NM/2000-3600 rpm (EEC net)

DIMENSION, CAPACITIES & SUSPENSIONS

- DIMENSIONS (mm):5100x1900x1895 mm (L x W x H)
- TRANSMISSION :10 SPEED AUTOMATIC TRANSMISSION
- FUEL TANK CAPACITY:110 L
- SEATING CAPACITY:6S

INTERIOR FEATURES & SAFETY

- LEATHER & WOOD STEERING WHEEL
- FINGIRE PRINT AUTHENTICATION (ENGINE START/STOP)
- LEXUS SAFETY SYSTEM +2.5
- LEXUS CONNECT APP
- MARK LEVINSON PREMIUM AUDIO WITH 25 SPEAKERS
- REAR SEAT ENTERTAINMENT SYSTEM
- Ecall - EMERGENCY CALL SYSTEM
- MULTI TERRAIN SYSTEM WITH CRAWL CONTROL & TURN ASSIST
- 3rd ROW SEATS WITH AUTO ARRANGE FEATURES
- DUAL DISPLAY INFOTAINMENT SYSTEM - 12.3" & 7"
- LANE TRACING ASSIST
- PANORAMIC VIEW MONITOR
- PRE-CRASH SAFETY SYSTEM WITH ADAPTIVE CRUISE CONTROL
- BLIND SPOT MONITOR WITH (RCTA)
- HEAD UP DISPLAY

EXTERIOR FEATURES

- 3 EYE LED HEADLAMPS WITH AHS
- SOFT CLOSING DOORS
- PARKING SUPPORT BRAKES
- POWER REAR DOOR WITH KICK SENSOR
- DIGITAL REAR VIEW MIRROR
- 22" PREMIUM ALLOY WHEELS