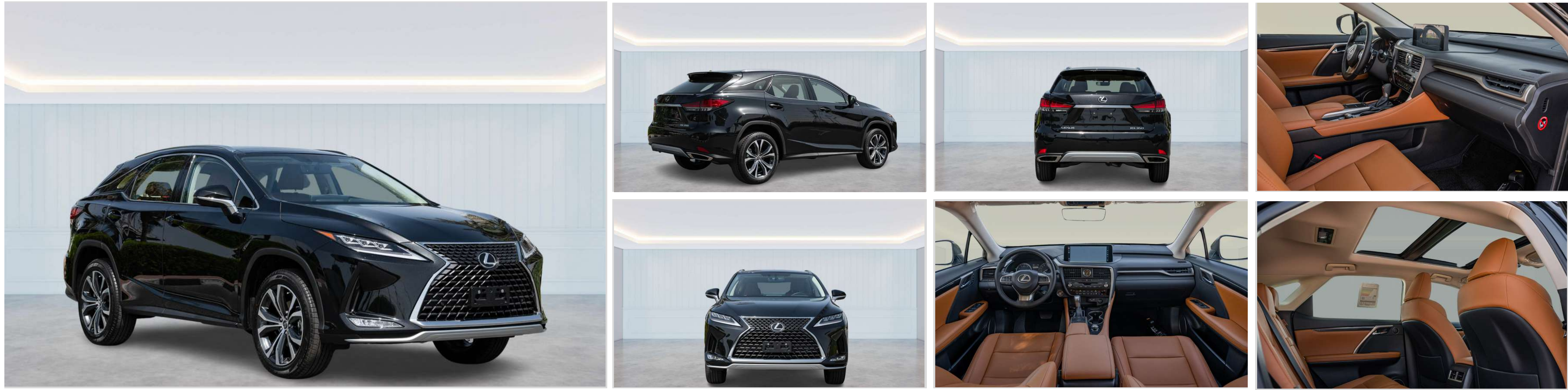


2023 LEXUS RX350 AWD V6 3.5L PETROL, AT



ENGINE & TRANSMISSION

- ENGINE SEQUENTIAL MULTI PORT ELECTRONIC FUEL INJECTION 3.5 LITRE, 6 CYLINDER DOHC WITH VVT-I
- HORSE POWER :296 HP/6300 RPM
- FUEL TANK CAPACITY : 72 L
- TORQUE (NM/RPM) 37.7 KG-M /4600-4700 RPM
- TRANSMISSION : TYPE 8 SPEED AUTOMATIC TRANSMISSION
- FUEL TYPE : PETROL

DIMENSION

- WIDTH (MM)1690 MM
- HEIGHT (MM)1895 MM
- LENGTH (MM)4890 MM

INTERIOR FEATURES & SAFETY

- ELECTRIC POWER STEERING - EPS
- ENGINE IMMOBILIZER ANTI THEFT SYSTEM
- WHEEL LOCKS
- TIRES: P235/55R20
- ALUMINUM ROOF RAILS
- VARIABLE INTERMITTENT WIPERS
- HEATED & VENTILATED FRONT SEATS
- 8-WAY POWER ADJUSTABLE DRIVER AND PASSENGER SEATS
- F-SPORT SEATS
- ILLUMINATED VANITY MIRRORS
- HEATED STEERING WHEEL
- AUTOMATIC AIR RECIRCULATION CONTROL SYSTEM
- LED FOG LAMPS
- LED DAYTIME RUNNING LIGHTS
- LEXUS NAVIGATION INCLUDES EMBEDDED NAVIGATION
- POWER REAR DOOR WITH JAM PROTECTION
- REAR CROSS TRAFFIC BRAKE
- PREMIUM TRIPLE BEAM LED HEADLAMPS
- AUTO LEVELLING HEADLAMP SYSTEM
- POWER TILT & TELESCOPIC STEERING WHEEL
- PADDLE SHIFTERS
- NUMBER OF SEATS 5
- WIRELESS CHARGING
- PANORAMIC MOONROOFS
- HEAD-UP DISPLAY
- BLIND SPOT MONITOR WITH - RCTA
- REMOTE TOUCH PAD
- 20" F SPORT ALLOY WHEELS
- REAR BUMPER PROTECTOR
- FRONT AND REAR SPLASH GUARDS
- WINDSHIELD WIPER DE-ICER
- 2-WAY POWER ADJUSTABLE LUMBAR SUPPORT
- DRIVER SEAT MEMORY SYTEM
- HEATED REAR SEATS
- AUTO DIMMING REAR VIEW MIRROR
- FLOOR MATS
- DUAL ZONE AUTOMATIC CLIMATE CONTROL
- HEAD-UP DISPLAY
- F-SPORT SCUFF PLATES
- ANDROID AUTO COMPATIABILITY
- APPLE CARPLAY COMPATIBILTY
- POWER ADJUSTABLE HEATED EXTERIOR MIRRORS
- 12.3" TOUCH DISPLAY
- INTUITIVE PARKING ASSIST WITH AUTO BRAKING
- PREMIUM LED REAR COMBINATOR LAMPS
- LETAHER WRAPPED SHIFT KNOB
- 3-SPOKE F-SPORT STEERING WHEEL
- NUMBER OF DOORS 5
- 12 SPEAKER PREMIUM SOUND AUDIO SYSTEM
- POWER FOLDING REAR SEATS 40/20/40
- POWER REAR DOOR WITH KICK SENSOR